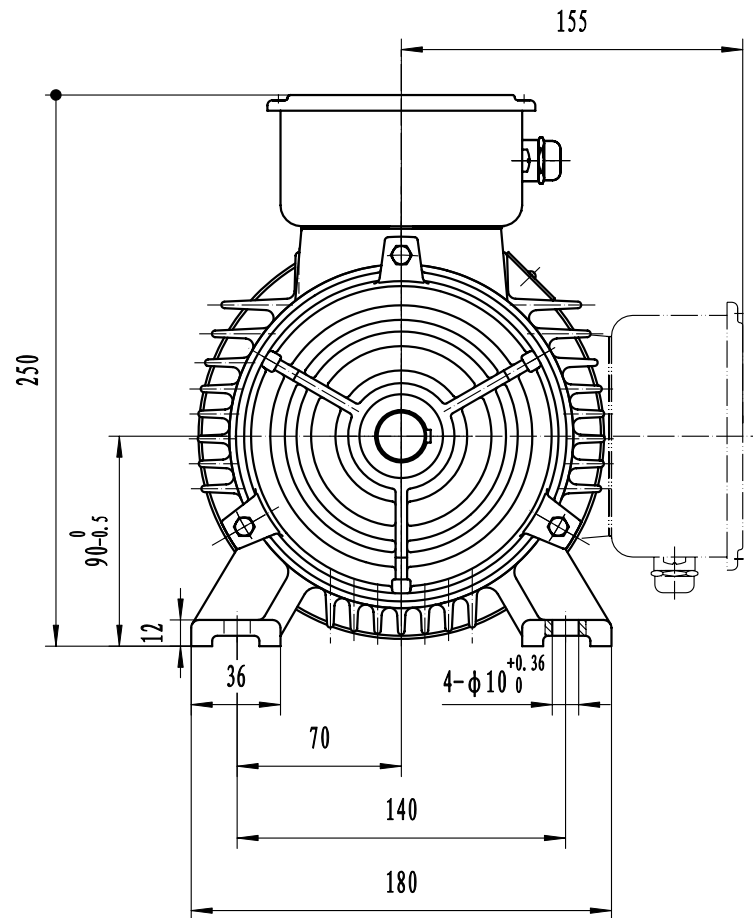
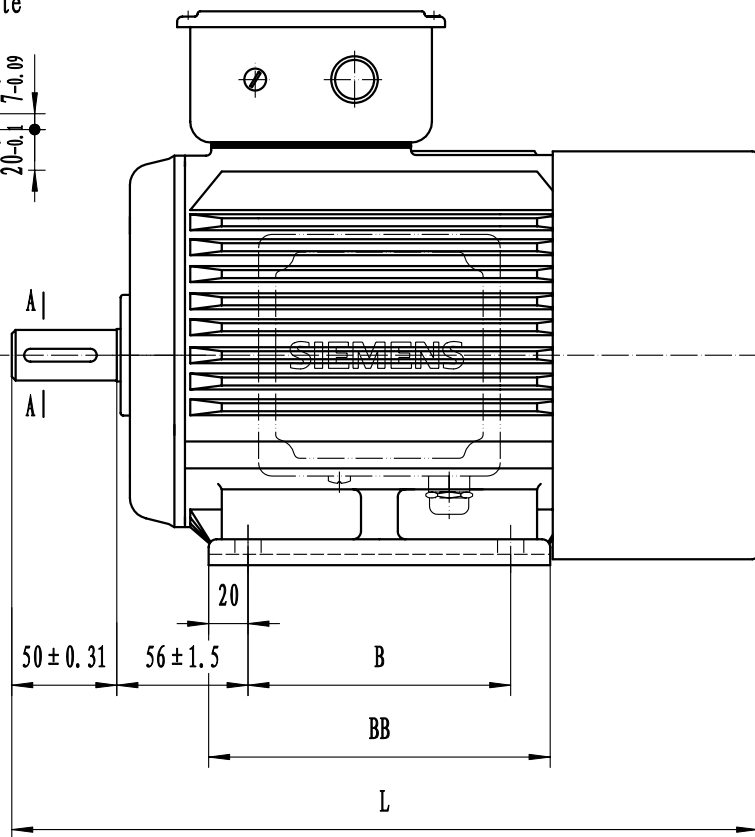
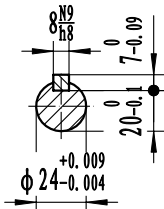


除非同意，严禁复制、散发、披露或以此文件及其中内容进行买卖交易。任何违背此条  
令者需承担全部法律责任。保留所有权利，特别是专利及已注册的设计所有权。

Unless it has been agreed otherwise it is strictly forbidden to copy distribute,  
disclose or trade this document or it's contents. Anybody in breach of this ban  
will be held liable for full compensation. All rights reserved, especially  
the right for patent or registered design lodgement.

A-A Rotate



注：电机（指实物）安装尺寸符合图中尺寸，外形尺寸不大于图中尺寸。

Note: Dimensions of mounting shall accord with drawing's dimensions, outline  
dimensions shall not exceed the drawing's dimensions.

Type	Power (kW)	B	BB	L
1LG0090-2AA	1.5	100	140	320
1LG0096-2AA	2.2	125	165	345
1LG0090-4AA	1.1	100	140	320
1LG0096-4AA	1.5	125	165	345
1LG0090-6AA	0.75	100	140	320
1LG0096-6AA	1.1	125	165	345

											Siemens Standard Motors Ltd.
											1LG0-90 (B3)
标记	处数	分区	更改文件号	签名	日期						Dimension of mounting and outline
设计	孙梅	20080721	标准化								
校对			审定								
审核	王庆中	20080722								1:2	
工艺			批准								

借(通)用件登记

旧底图总号

底图总号

签 字

日 期